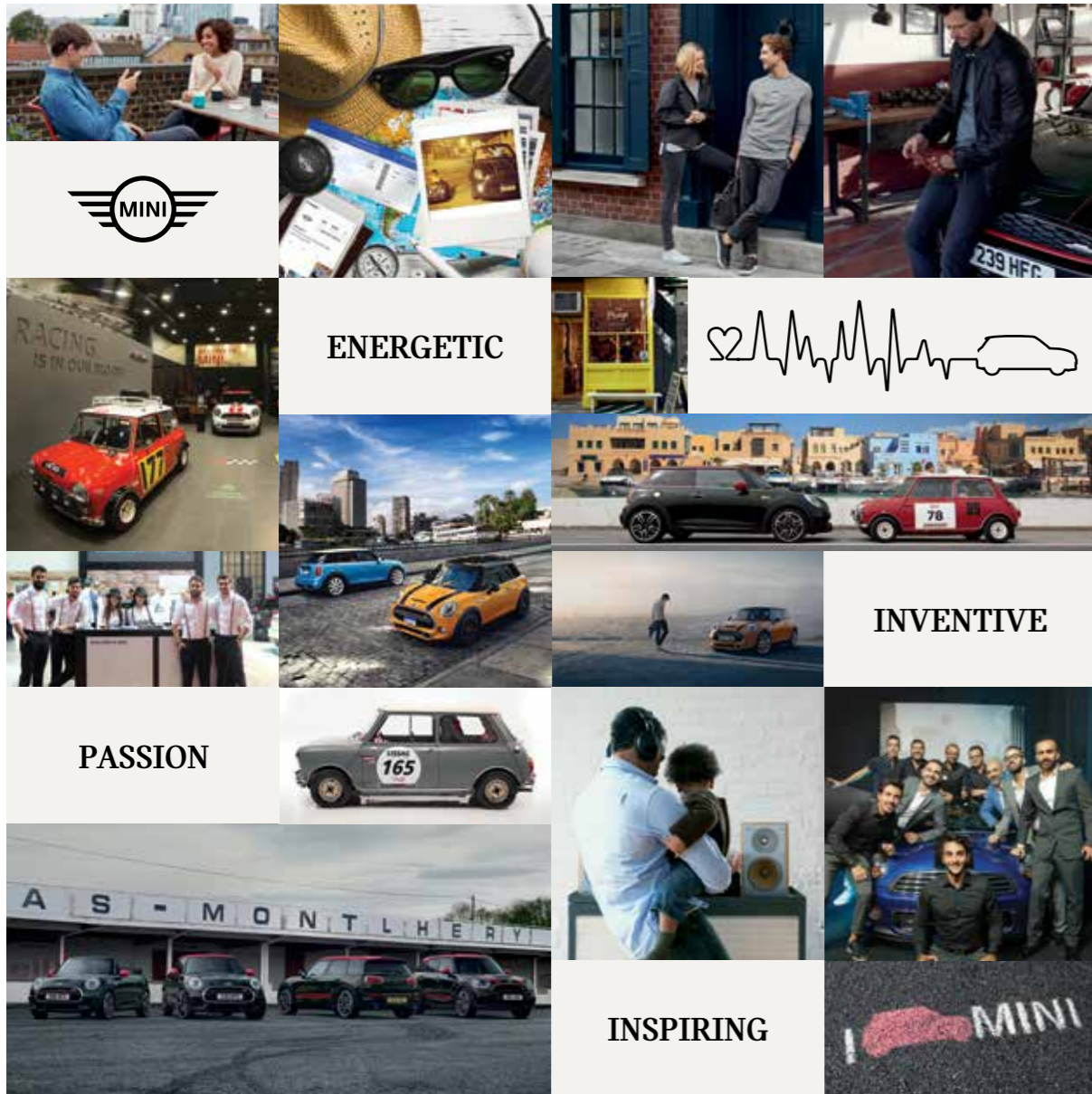




THE MINI FAMILY.



SO MANY REASONS TO GET A MINI.



Driver Technology

PREMIUM TECHNOLOGY IN ITS PLACE. AT YOUR FINGERTIPS.

Easy-to-use performance, entertainment and communication technology at your beck-and-call via the intuitive MINI Connected system. Whether you're trying to plug into the world around you with traffic, weather and location updates, or trying to get away from it all by listening to Spotify® and hammering through different driving modes, you can enhance your ride with the push of a button.

World Famous Handling

DRIVE IT AND YOU WILL UNDERSTAND.

Motoring in a MINI simply isn't like driving other cars. That's why we call it «motoring». And why there are thousands of testimonials online to its world-famous, razor-sharp handling. Some people equate the incredibly responsive ride to a roller coaster; others, a go-kart. Whatever the truth, it's the performance most people expect from a high-powered sports car. Sans the hefty price tag.

Surprising Size

MORE ROOM THAN YOU EXPECT. GUARANTEED.*

Almost without fail, people unfamiliar with us are shocked at how spacious the inside of a MINI really is. But we've been performing this magic trick for over 50 years. Because innovations we introduced in 1959 for the Classic Mini, such as turning the engine sideways and our famous wheels-at-the-corners layout, were actually invented for the sole purpose of creating as much passenger room as possible. Of course, another way to create more space is to ignore the naysayers and grammar police and simply build a bigger MINI. Or two. Which is exactly what we did with the MINI Countryman and new 2016 Clubman.

* Claim only valid for people who have never actually sat inside a MINI before.

MINI Design

ICONIC DESIGN, TAILORED TO FIT.

There are few vehicles on the road (or track) as recognizable as a MINI. For what began as brilliant solution to a global oil crisis soon morphed into an international sensation, perfectly capturing the relentless spirit and optimism of contemporary culture. Decades later, our size and tastes have grown up a bit, with larger models and more sophisticated materials and finishes. But with well over 10 million ways to design a MINI, we're certain yours will suit you exceedingly well.

MEET THE MINI FAMILY.

FIND YOUR PERFECT MATCH.



MINI 3-DOOR HATCH.



MINI 5-DOOR HATCH.



MINI CLUBMAN.



MINI CONVERTIBLE.



MINI COUNTRYMAN.



MINI 3-DOOR HATCH. THE ORIGINAL MINI.



SALT EDITION.

ENGINE & TRANSMISSION.

1.5L, 3 Cylinders TwinPower Turbo Engine
Displacement in cm³ 1499
Power: 100/136/4400-6,000 (KW/HP/RPM)
Torque: 220/1250-4,300 (NM/RPM)

PERFORMANCE.

Acceleration 0-100 in 7.8 sec.

SAFETY.

6 Airbags, ABS, BA, CBC, DSC, DTC, ELDC.

WHEELS.

Light-alloy Wheels 15" Heli Spoke Silver
Dimensions 175/65 R15

PROFILE HIGHLIGHTS.

- Cloth Firework Carbon Black/Carbon Black
- Floor mats in velour
- Height adjustment for front passenger seat
- Storage compartment package
- Fog lights
- On-board computer
- Lights package

- Automatic transmission
- Emergency spare wheel
- Warning triangle
- Smoker's package
- Metallic Color
- Exterior mirror package
- Chrome Line Exterior
- Rear Park Distance Control
- Headliner anthracite
- Rear fog light
- Emergency Spare Wheel
- Automatic Foldable Mirrors
- MINI Driving Modes
- Sport leather steering wheel
- Automatic air conditioning
- Radio MINI Visual Boost
- MINI Connected with 6.5 inch screen
- MINI Excitement Pack: Bluetooth interface including audio streaming central instrument with LED ring.
- Multifunction for steering wheel
- Front armrest
- Cruise control with braking function
- Rain sensors
- Child seat ISOFIX attachment
- Heated windscreen washer jets
- Automatic lock when driving away



MINI COOPER.



MINI 3-DOOR HATCH.

CHILI EDITION.

ENGINE & TRANSMISSION.

1.5L, 3 Cylinders TwinPower Turbo Engine
Displacement in cm³ 1499
Power: 100/136/4400-6,000 (KW/HP/RPM)
Torque: 220/1250-4,300 (NM/RPM)

PERFORMANCE.

Acceleration 0-100 in 7.8 sec.

SAFETY.

6 Airbags, ABS, BA, CBC, DSC, DTC, ELDC.

WHEELS.

Light-alloy Wheels 17" Tentacle Spoke silver
Dimensions 205/45/R17

PROFILE HIGHLIGHTS.

Salt Edition.

- + Leather Cross Punch- Carbon Black including lumbar support
- + LED Fog Lights
- + Navigation system professional
- + Sport seats for driver and front passenger
- + LED Headlights with extended contents
- + White direction indicator lights
- + Panoramic Glass Roof
- + Sun Protection Glazing
- + HiFi loudspeaker system Harman Kardon
- + MINI Connected XL with 8.8 Inch Screen
- + Alarm System



MINI COOPER.

MINI 5-DOOR HATCH.

GO-KART ALL THE WAY.

PEPPER EDITION.

ENGINE & TRANSMISSION.

1.5L, 3 Cylinders TwinPower Turbo Engine
 Displacement in cm³ 1499
 Power: 100/136/4400-6,000 (KW/HP/RPM)
 Torque: 220/1250-4,300 (NM/RPM)

PERFORMANCE.

Acceleration 0-100 in 7.8 sec.

SAFETY.

6 Airbags, ABS, BA, CBC, DSC, DTC, ELDC.

WHEELS.

Light-alloy Wheels 17" Roulette Spoke two-tone
 Dimensions 205/45/R17

PROFILE HIGHLIGHTS.

- Cloth/leatherette combination Black Pearl
 Carbon Black/Carbon Black

- Sport leather steering wheel
- Floor mats in velour
- Height adjustment for front passenger seat
- Storage compartment package
- Rain sensor
- Automatic air conditioning
- On-board computer
- Lights package
- LED fog lights
- Multifunction for steering wheel
- Panorama glass roof
- Sun Protection Glazing
- Child seat ISOFIX attachment
- Armrest front
- Sport seats for driver and front passenger
- MINI Driving Modes
- Cruise control with braking function
- LED headlights with extended contents
- Rear fog light
- Automatic Foldable Mirrors
- Radio MINI Visual Boost
- MINI Connected with 6.5 inch screen
- White direction indicator lights
- Radio control Oceania
- Language version English
- English / on-board documentation
- Arabic/on-board documentation
- Automatic transmission
- Emergency spare wheel
- Warning triangle
- Smoker's package
- Chrome Line Exterior
- Rear Park Distance Control
- Headliner anthracite
- Heated windscreen washer jets
- Automatic lock when driving away



MINI COOPER.



THE MINI CLUBMAN. SPACE REINVENTED.

CHILI EDITION.

ENGINE & TRANSMISSION.

1.5L, 3 Cylinders TwinPower Turbo Engine
Displacement in cm³ 1499
Power: 100/136/4400-6,000 (KW/HP/RPM)
Torque: 220/1250-4,300 (NM/RPM)

PERFORMANCE.

Acceleration: 0 -100 Km/H 9.1sec

SAFETY.

6 Airbags, ABS, BA, CBC, DSC, DTC, ELDC.

WHEELS.

Light-alloy Wheels 17" Spoke Silver
Dimensions 225/45/R17

PROFILE HIGHLIGHTS.

- Cloth/leatherette combination Black Pearl Carbon Black/Carbon Black
- Steptronic transmission
- Navigation system Professional
- Enhanced Bluetooth Mobile Preparation
- Multifunction for steering wheel
- Comfort access system
- Floor mats in velour
- Front armrest
- Storage compartment package
- MINI Driving Modes
- Roof rails
- Automatic air conditioning
- Lights package
- LED fog lights
- LED headlights
- Emergency spare wheel

- Alarm system
- Seat Adjustment, electric, with memory for driver's seat
- Child Seat ISO Fix Attachment
- Interior & exterior mirrors with automatic anti-dazzle function
- Heated windscreen washer jets
- Interior rear-view mirror with automatic anti-dazzle function
- Chrome Line Exterior
- Panorama glass roof
- Sun protection glazing
- Smoker's package
- Headliner anthracite
- Interior surface Piano Black
- Park Distance Control (PDC)
- Cruise control with braking function
- Speedometer with kilometer reading
- LED headlights with extended contents
- Rear fog light
- Automatic Foldable Mirrors
- HiFi loudspeaker system Harman/Kardon
- 3D navigation
- MINI Connected XL with 8.8 inch screen
- Operation via MINI Touch controller and touch screen
- Hot-climate version
- Language version English
- English / on-board documentation
- Arabic / on-board documentation
- Head- up display
- Automatic lock when driving away



MINI COOPER.



MINI COOPER.

THE MINI CABRIO.

STAY OPEN.



MINI COOPER.



CHILI EDITION.

ENGINE & TRANSMISSION.

1.5L, 3 Cylinders TwinPower Turbo Engine
 Displacement in cm³ 1499
 Power: 100/136/4400-6,000 (KW/HP/RPM)
 Torque: 220/1250-4,300 (NM/RPM)

PERFORMANCE.

Acceleration 0-100 km/h 8.8 sec.

SAFETY.

6 Airbags, ABS, BA, CBC, DSC, DTC, ELDC.

WHEELS.

Light-alloy Wheels 17" Propeller Spoke two-tone
 Dimensions 205/45/R17

PROFILE HIGHLIGHTS.

- Cloth/leather combination Diamond Carbon Black/Carbon Black
- Multifunction for steering wheel
- Sport leather steering wheel
- Floor mats in velour
- Height adjustment for front passenger seat
- Sport seats for driver and front passenger
- Storage compartment package
- MINI Driving Modes
- Rain sensor
- Automatic air conditioning
- On-board computer
- Lights package

- LED fog lights
- White direction indicator lights
- Steptronic transmission
- Run flat tyres
- Alarm system
- Exterior mirror package
- Chrome Line Interior
- Chrome Line Exterior
- Wind deflector
- Mirror caps in body color
- Soft-top MINI Yours
- Warning triangle
- Interior and exterior mirrors with automatic anti-dazzle function
- Interior rear-view mirror with automatic anti-dazzle function
- Smoker's package
- Armrest front
- Park Distance Control (PDC)
- Cruise control with braking function
- LED headlights
- Rear fog light
- HiFi loudspeaker system Harman Kardon
- Always Open Timer
- Radio MINI Visual Boost
- MINI Connected with 6.5 inch screen
- Language version English
- English & Arabic / on-board documentation
- Child seat ISOFIX attachment
- Automatic lock when driving away
- Automatic Foldable Mirrors

THE NEW MINI COUNTRYMAN. ADD STORIES.



SALT EDITION.

ENGINE & TRANSMISSION.

1.5L, 3 Cylinders TwinPower Turbo Engine
Displacement in cm³ 1499
Power: 100/136/4400-6,000 (KW/HP/RPM)
Torque: 220/1250-4,300 (NM/RPM)

PERFORMANCE.

Acceleration: 0-100km/h 9.6 sec.

SAFETY.

6 Airbags, ABS, BA, CBC, DSC, DTC, ELDC.

WHEELS.

Light-alloy Wheels 17" Channel Spoke
Dimensions 225/55/R17

PROFILE HIGHLIGHTS.

- Cloth Firework Carbon Black/ Carbon Black
- Floor mats in velour
- Height adjustment for front passenger seat
- Storage compartment package
- Automatic air conditioning
- Lights package
- LED fog lights
- Steptronic Transmission
- Multifunction for Steering Wheel

- Sport leather steering wheel
- Emergency spare wheel
- Chrome Line Exterior
- Roof rails
- Warning triangle
- Smoker's package
- Armrest front
- Centre armrest in rear
- Seat adjustment for rear seats
- MINI Driving Modes
- Park Distance Control (PDC)
- Cruise Control with braking function
- Speedometer with kilometer reading
- LED headlights with extended contents
- Rear fog light
- Automatic Foldable Mirrors
- Radio MINI Visual Boost
- MINI Connected with 6.5 inch screen
- Hot-climate version
- Language version English
- English & Arabic / on-board documentation
- Automatic lock when driving away
- Daytime driving lights selectable by Lights menu
- Emergency Spare Wheel
- Child seat ISOFIX attachment



THE NEW MINI COUNTRYMAN.



MINI COOPER.

CHILI EDITION.

ENGINE & TRANSMISSION.
1.5L, 3 Cylinders TwinPower Turbo Engine
Displacement in cm³ 1499
Power: 100/136/4400-6,000 (KW/HP/RPM)
Torque: 220/1250-4,300 (NM/RPM)

PERFORMANCE.
Acceleration: 0-100km/h 9.6 sec.

SAFETY.
6 Airbags, ABS, BA, CBC, DSC, DTC, ELDC.

WHEELS.
Light-alloy Wheels 18" Black Pin Spoke
Dimensions 225/50/R18

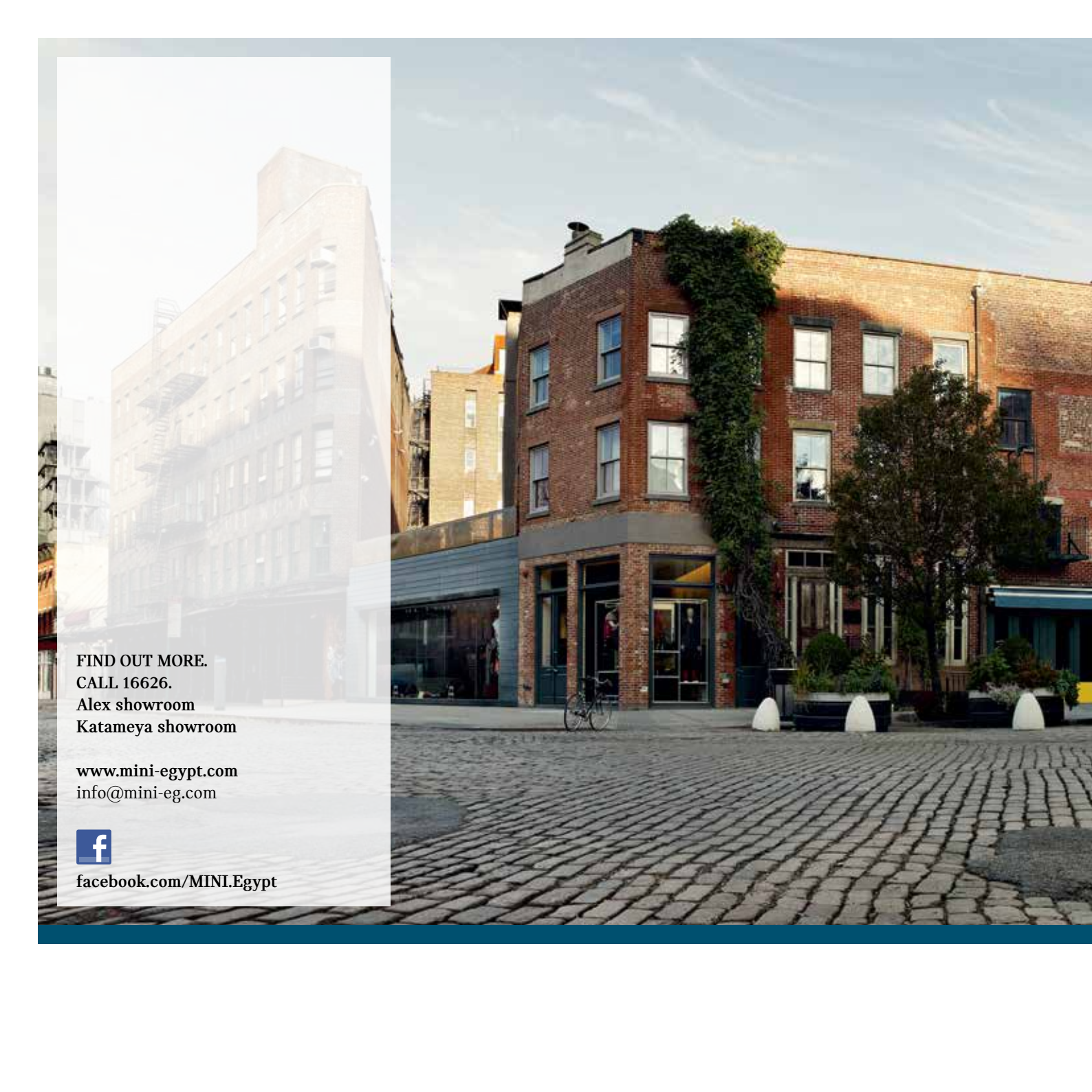
PROFILE HIGHLIGHTS. SALT EDITION.

- + Navigation system Professional
- + Comfort access system
- + Sport seats for driver and front passenger
- + Panorama glass roof
- + Sun protection glazing
- + MINI Yours Interior Style Piano Black illuminated
- + 3D navigation
- + Operation via MINI Touch controller and touch screen
- + Contains MINI Country Timer (display of distance travelled on rough tracks)
- + MINI Connected with 8.8 Inch Touch Screen





MINI COOPER.



FIND OUT MORE.
CALL 16626.
Alex showroom
Katameya showroom

www.mini-egypt.com
info@mini-eg.com



facebook.com/MINI.Egypt